



# AVA LED

## AD-1

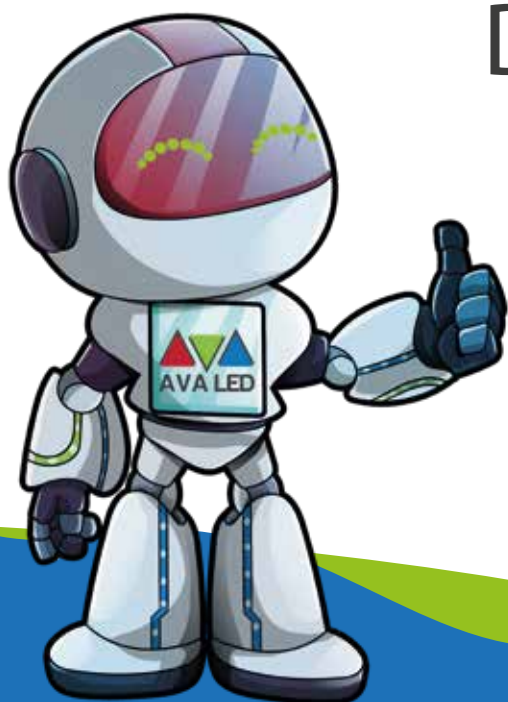
## P1,56

## Data Sheet

TN FIX SERIES OTHER MODELS

**INDOOR FRONT SERVICE SERIES**

TN-PRO-IF-1 "P1,56" PLUS



QUALITY IN DETAIL





# TITLE OF CONTENTS

02 - 04	○	Features
05	○	Specification
06 - 08	○	Vision - Products Detail
09	○	Safety
10-11	○	Installation - Size
12-13	○	Photo- Company Info

- \* Magnesium Die-Casting Cabinet
- \* Cabinet Size : 600x337,50x50mm
- \* Videowall systems
- \* asy and fast instalation
- \* High end Refresh Rate
- \* A Class LED Chip
- \* Pixel to Pixel 8K - 4K & HD
- \* Resolutions Standard 16:9 size
- \* +18 Bit
- \* HDR
- \* Clear View
- \* 8K refresh Rate
- \* Best Quality Pcs
- \* Very thin case structure 5cm
- \* Very Light 5kg.
- \* PWM IC



### P1,56 Indoor Products

- \*\*\* Weight : 5kg
- \*\*\* Dimension : 600mm x 337,50mm x 50mm
- \*\*\* 15 pcs in 1 Case : 119kg.
- \*\*\* Front Services
- \*\*\* SQM: 409.600 Pixel
- \*\*\* Magnesium Die-Casting
- \*\*\* Nova Star Controller
- \*\*\* SMD 1010
- \*\*\* SPACE BLACK

FEATURES



## ○ TECHNICAL SPECIFICATION

MODEL NAME Version	AD 1 "P1,56"
Pixel Pitch	1,5625mm
Pixel Configuration	SMD 1010
LED	Space Black
Processing	-
Processing	18 Bit
Pixel Density / m2	409600
Resolution/SQM	640 x 640
Cabinet Resolution 600x337,5	384 x 216
Pixel Density / Cabinet	82944
Module Size (mm)	300 x 168,75
Cabinet Size (mm)	600 x 337,5 x 50
Module Per Cabinet	4
Module Resolution	192 x 108
Weight Per Panel Net kg. 640x480mm	5kg.
Rotation per 90 Degree	✓
Free Rotation (with R5)	✓
Mapping	✓
Clear View	✓
Low Latency	✓
HDR	✓
Power Consumption (<w/sqm)	500
Average Power Consumption (<w/sqm)	150
Driving Method	1/48
Brightness	>800 Nits
Refresh Rate	-
Refresh Rate High Refresh	>3840Hz
Refresh Quality	Best Quality
High Refresh (PLL inside)	✓
High Refresh Power Saving	✓
High Refresh Dynamic Power Saving	✓
Driving IC Type	PWM
Refrate Quality 2	8K Refresh Rate
No Waterless Ripple of Camera	>%90
Cabinet Material	Die-Casting Aliminum
Horizontal Viewing Angle	140 (±30)
Vertical Viewing Angle	140 (±30)
Expected LED Lifetime %50	100,000 Hours
IP Rating	IP20
PCB Quality	Best Quality
Module - Mask Quality	Best Quality
LED Chip	Class A
Picture / Video Quality	Best Quality
Grey Scale	262144
Control Systems	Nova Star
Operating Temperature Range	-10 – +60 (±10)
Operating Humidity Range	-40°C~+60°C,10%-90%RH
Voltage Range	200 ~240VAC
Packing include	Plate-Power-Cat5 Cable
Certificate	CE/EMC/LVD-ATR-EUR1 ISO-9001:2015 ISO-14001:2015

The data written in the catalog may differ by + - 10%

### ULTRA WIDE VIEWING ANGLE



Both 160° from horizontal & vertical for the viewing angle.  
Seeing from five directions, it would be still the natural and clear image in an LED display.

### ULTRA FAST RESPONSE



Perfect Rendering Dynamic Picture

Response speed



Smear Ghosting Phenomenon

### 18 BIT GREY SCALE



AVA LED



Others

**HIGHLY COST EFFECTIVE  
&  
STABLE QUALITY**

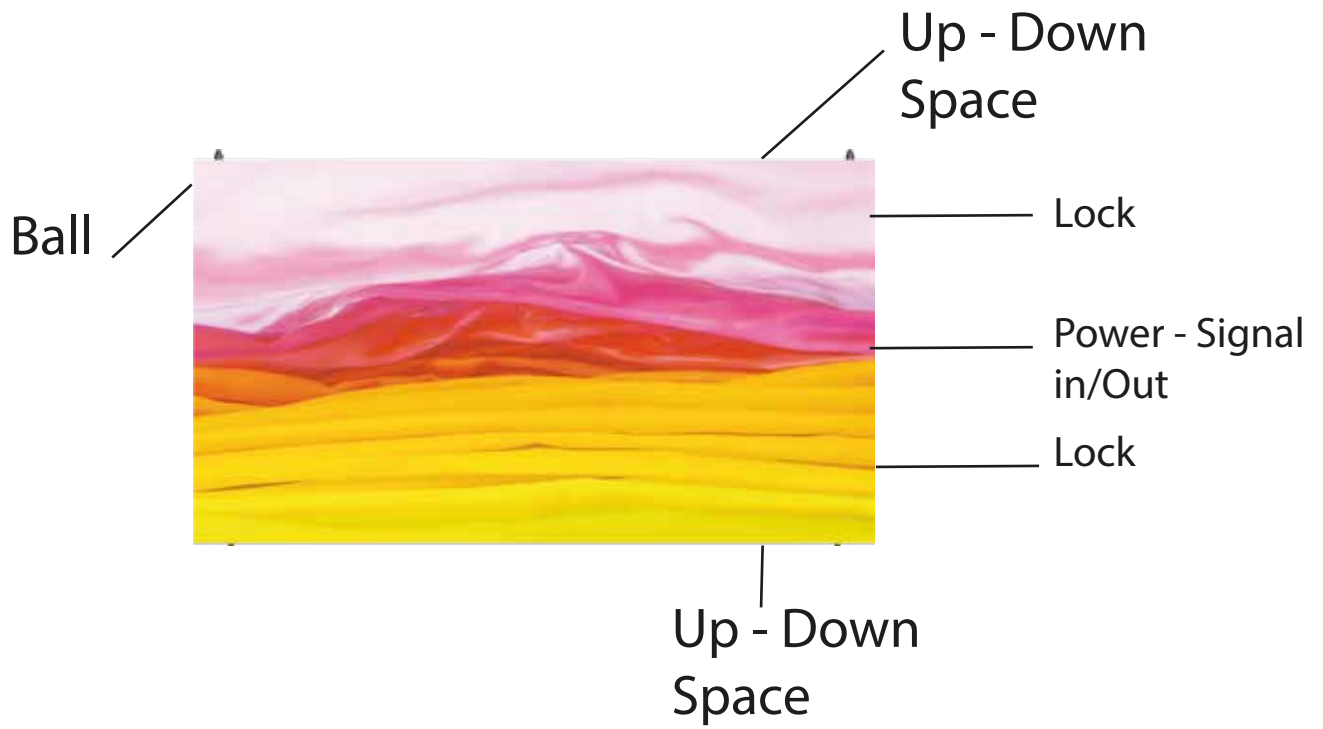


It delivers a truly amazing picture with extraordinary pixels producing an image that is HD quality in an LED Screen. ipsum



QUALITY IN DETAIL





FRONT SERVICES

5 Seconds Front Maintenance





CASE



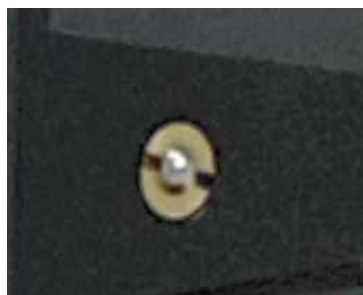
CONNECTION



HANDLE



PART OF FOR WALL



BALL



FLY BAR

The support structure has to be provided and installed by the customer because they vary from project to project. The following issues must be considered:

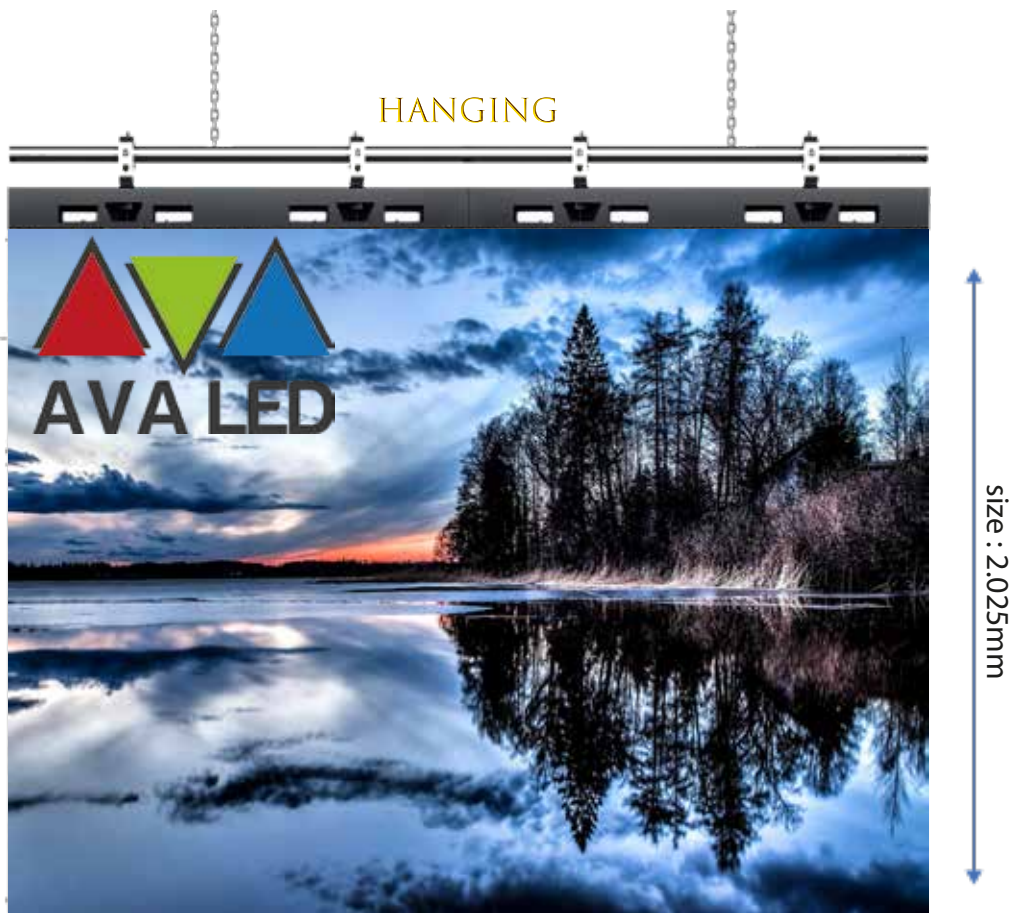
**Weight tolerances:** Ensure that the support structure and the floor on which or the wall against which the support structure has to be installed, is qualified to handle the complete weight of the LED display screen.(which can be provided by manufacturer.

**Environmental conditions:** Humidity, wind, temperatures, rain, snow etc.

**Location:** Outdoor/.Indoor, altitude, etc. Usually, for outdoor display screen, the customer should build top cover and side cover for IP protection (Including waterproof and dustproof)

**Ground stability**

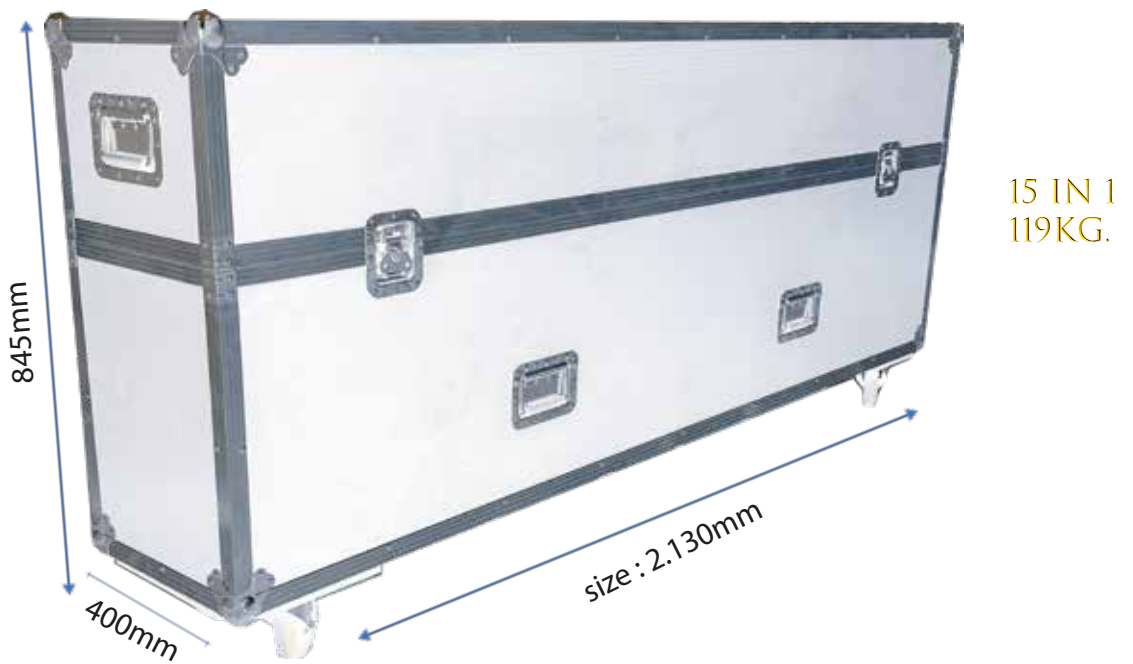
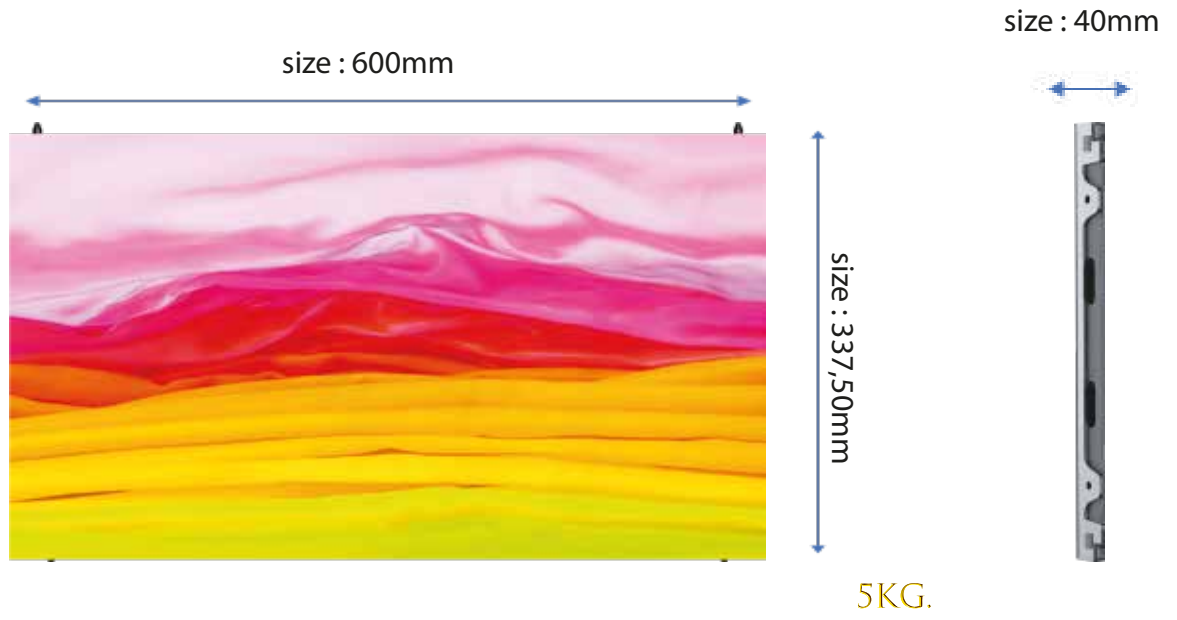
**Front clearances:** For making sure there is sufficient free area in front of the LED display screen and respect the maximum viewing angles and distance. Local regulations regarding such installation.



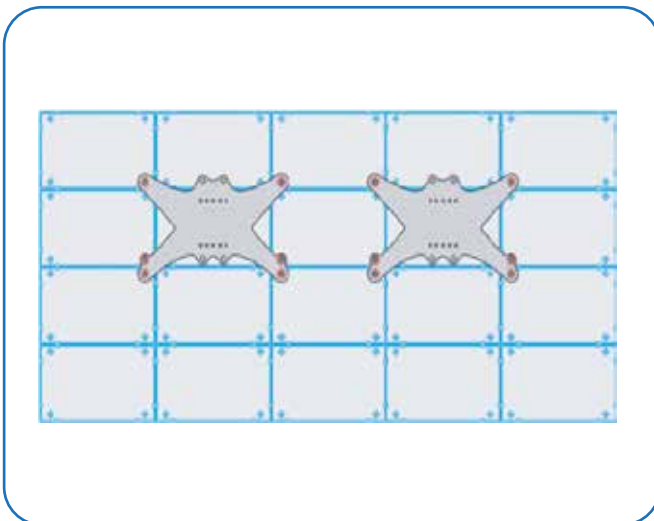
size : 3.600mm

size : 2.025mm

# SCREEN SIZE



QUALITY IN DETAIL





# AVA LED

[www.avaledscreen.com](http://www.avaledscreen.com)

[info@avaledscreen.com](mailto:info@avaledscreen.com)

AVA GROUP GMBH

Adress: Goethestraße 7D - 40237 Düsseldorf / Germany

Phone : +49 211 730 64 817

